
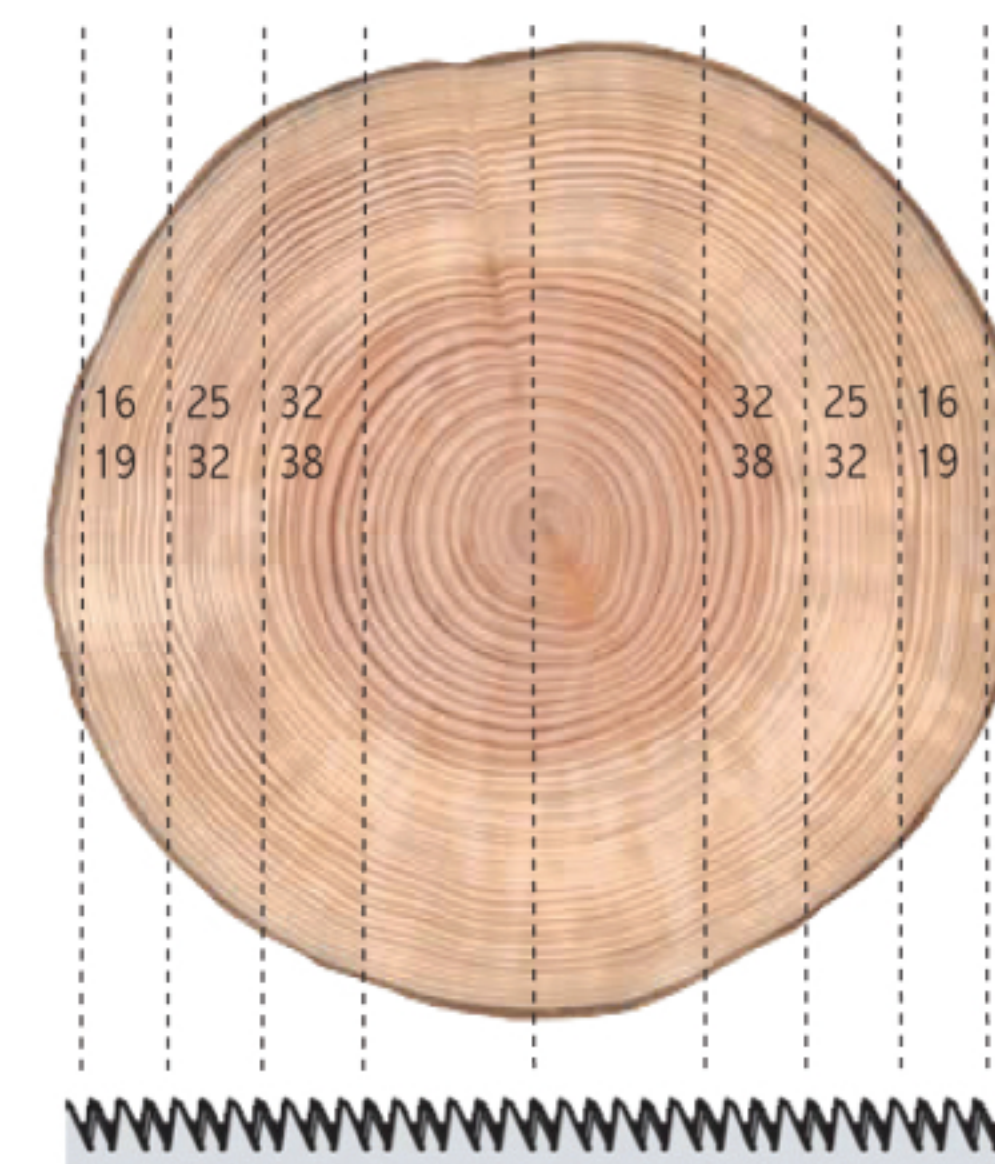


## Redwood edged side boards Prime Quality

- Raw material:** Winter felled butt log  
Sourced from the best pine districts in Scandinavia
- Production:** Sawn in frame saw
- Drying:** Air dried / chamber dried
- Moisture content:** Shipping dried: 16% + -2%  
Special drying: 10% + -2%
- Sorted:** Inspected and quality determined after drying  
the boards are sharp-edged allowing max 5 mm wane  
In principle 3-4 sides free of knots  
Poorer quality screened
- Measuring:** width & length  
Package Specification supplied
- Marking:** SA  S trademark in the packet end or own Stamp
- Dimensions:**  
16 x 75 /100 /125 /150 mm  
19 x 75 /100 /125 /150 mm  
25 x 75 /100 /125 /150 /175/ 200 mm  
32 x 100 /125 /150 /175/ 200 mm  
38 x 100 /125 /150 /175/ 200 mm
- Lengths:**  
Falling lengths: from 2.7 to 6.0 meters  
Average Length approx: 4.0 m



PEFC- Certified



**ANSGARIUS  
SVENSSON AB**  
Södra Vi

Ansgarius Svensson AB • Box 145 • S-598 71 Södra Vi • SWEDEN  
Visiting Address: Industrigatan 35, Södra Vi  
Phone: +46 492-209 80 • Fax: +46 492-209 60  
info@ansgariussvenssonab.se • www.ansvab.se