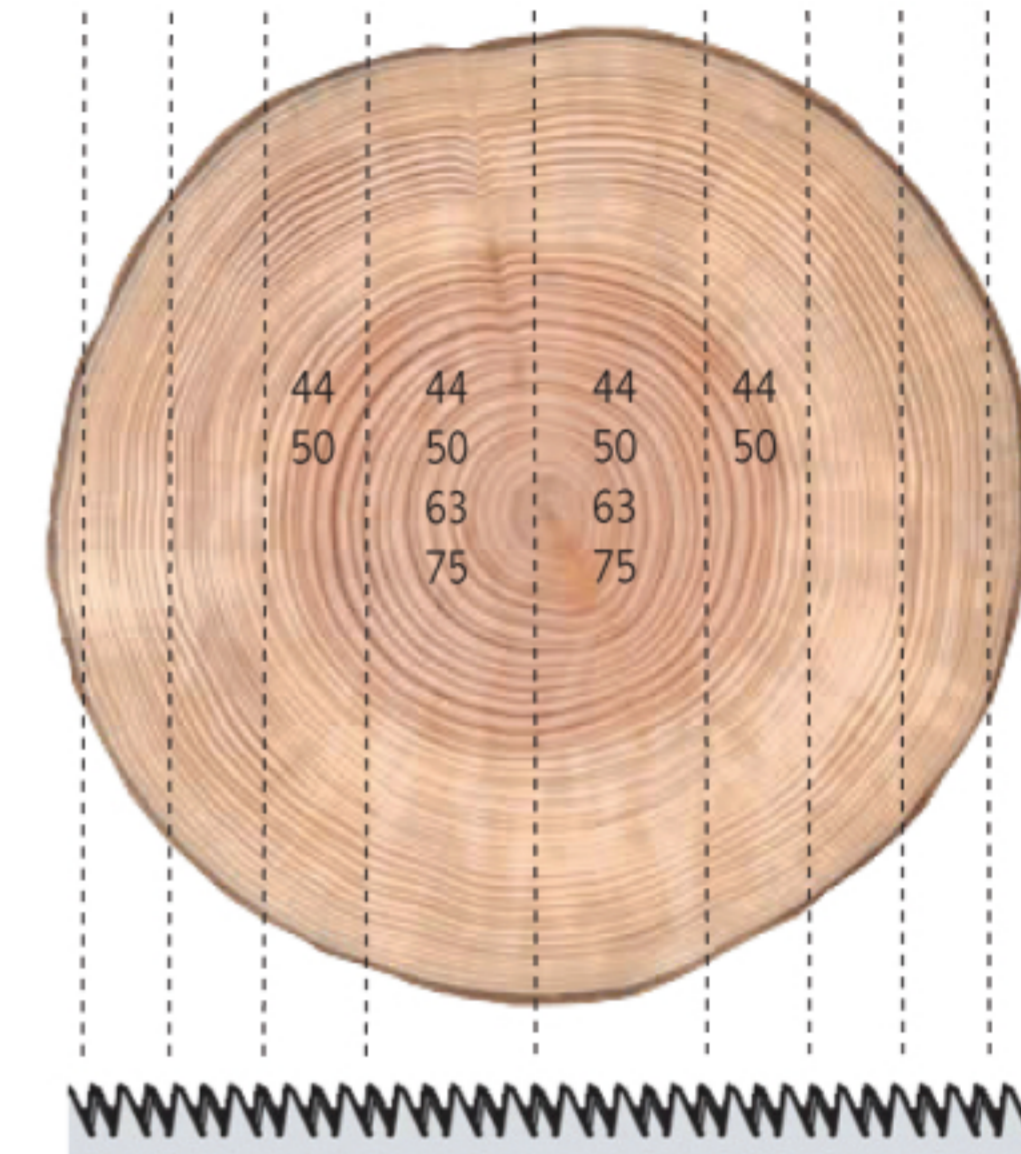


White wood Boule (Stammware) Prime Quality

Raw material:	Winter felled butt log Sourced from the right spruce districts in Scandinavian	
Production:	Sawn in frame saw	
Drying:	Air dried / chamber dried	
Moisture content:	Shipping dried: 16% + -2% Special drying: 10% + -2%	
Sorted:	Inspected and quality determined by the following after drying Good A-quality approximately 15% B-quality Poorer quality screened	
Measuring:	Each piece is marked with black chalk width & length	
Length:	30:30 cm	
Width:	1:1 cm measured on the middle plank, narrow side Package Specification supplied	
Marking:	SA  S trademark in the packet end or own Stamp	
Dimensions:		Average widths
Narrow sizes:	63, 75 mm	20-21 cm
Normal sizes:	44, 50, 63, 75 mm	23-28 cm
Wide sizes:	50, 63, 75 mm	32-34+ cm
Lengths:		
Falling lengths:	from 2.7 to 6.0 meters	
Average Length approx:	4.0 m	



PEFC- Certified



**ANSGARIUS
SVENSSON AB**
Södra Vi

Ansgarius Svensson AB • Box 145 • S-598 71 Södra Vi • SWEDEN
Visiting Address: Industrigatan 35, Södra Vi
Phone: +46 492-209 80 • Fax: +46 492-209 60
info@ansgariussvenssonab.se • www.ansvab.se