
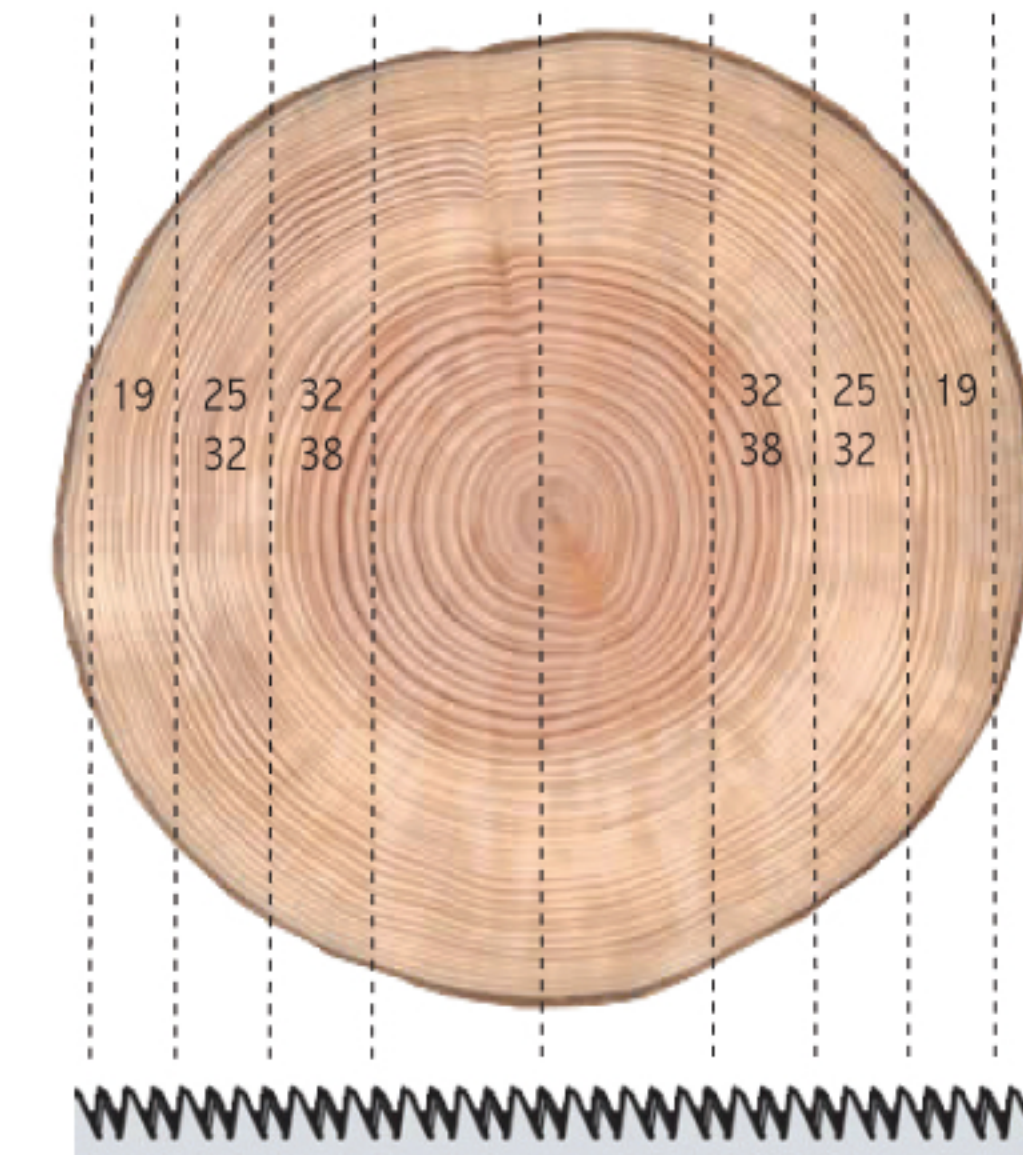


# White wood Sideboards Prime Quality

- Raw material:** Winter felled butt log  
Sourced from the best spruce districts in Scandinavia
- Production:** Sawn in frame saw
- Drying:** Air dried / chamber dried
- Moisture content:** Shipping dried: 16% + -2%  
Special drying: 10% + -2%
- Sorted:** Inspected and quality determined by the following after drying  
16-32 mm Prime quality  
38-50 mm Prime quality approximately 10% B-quality  
Poorer quality screened
- Measuring:** Each piece is marked with black chalk width & length  
**Length:** 30:30 cm  
**Width:** 1:1 cm measured on the middle plank, narrow side  
Package Specification supplied
- Marking:** SA  S trademark in the packet end or own Stamp
- Dimensions:**
- |           | Average widths |
|-----------|----------------|
| 19 mm     | 15-16 cm       |
| 25, 32 mm | 16-19 cm       |
| 38 mm     | 20-24 cm       |
- Lengths:**  
Falling lengths: from 2.7 to 6.0 meters  
Average Length approx: 4.0 m



PEFC- Certified



**ANSGARIUS  
SVENSSON AB**  
Södra Vi

Ansgarius Svensson AB • Box 145 • S-598 71 Södra Vi • SWEDEN  
Visiting Address: Industrigatan 35, Södra Vi  
Phone: +46 492-209 80 • Fax: +46 492-209 60  
info@ansgariussvenssonab.se • www.ansvab.se