
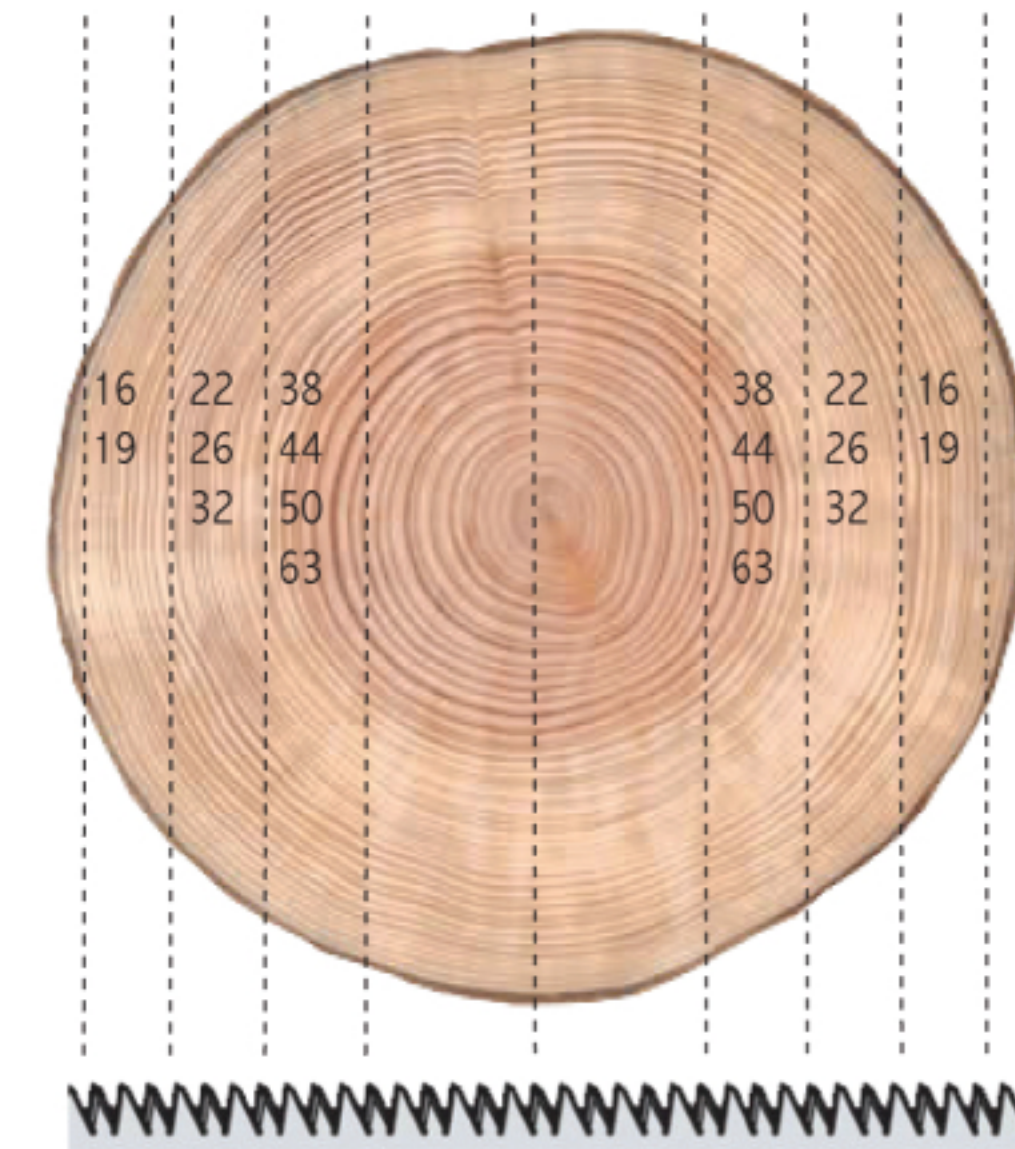


Redwood unedged side boards Prime Quality

Raw material:	Winter felled butt log Sourced from the best pine districts in Scandinavia								
Production:	Sawn in frame saw								
Drying:	Air dried / chamber dried								
Moisture content:	Shipping dried: 16% + -2% Special drying: 10% + -2%								
Sorted:	Inspected and quality determined by the following 16-32 mm First class A- quality 38 + mm Good A-quality approximately 10% B-quality Poorer quality screened								
Measuring:	Each piece is marked with black chalk width & length								
Lenght:	30:30 cm								
Width:	1:1 cm measured on the middle plank, narrow side Package Specification supplied								
Marking:	SA  S trademark in the packet end or own Stamp								
Dimensions:	<table><thead><tr><th></th><th>Average widths</th></tr></thead><tbody><tr><td>16, 19, 22 mm</td><td>15-16 cm</td></tr><tr><td>26, 32, 38 mm</td><td>17-20 cm</td></tr><tr><td>44, 50, 63 mm</td><td>24-28 cm</td></tr></tbody></table>		Average widths	16, 19, 22 mm	15-16 cm	26, 32, 38 mm	17-20 cm	44, 50, 63 mm	24-28 cm
	Average widths								
16, 19, 22 mm	15-16 cm								
26, 32, 38 mm	17-20 cm								
44, 50, 63 mm	24-28 cm								
Lengths:									
Falling lengths:	from 2.7 to 6.0 meters								
Average Length approx:	4.0 m								



PEFC- Certified



Ansgarius Svensson AB • Box 145 • S-598 71 Södra Vi • SWEDEN
Visiting Address: Industrigatan 35, Södra Vi
Phone: +46 492-209 80 • Fax: +46 492-209 60
info@ansgariussvenssonab.se • www.ansvab.se