
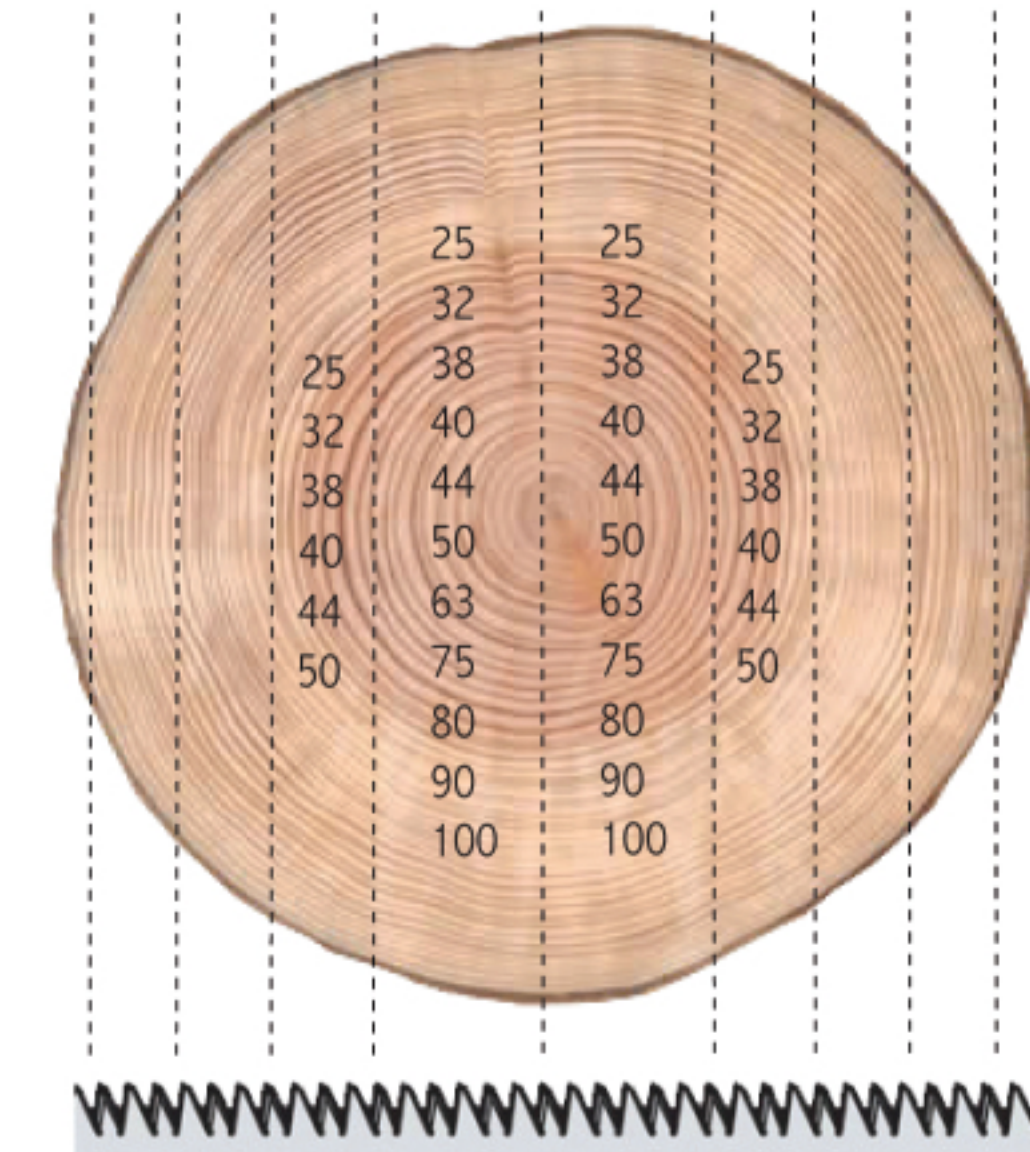


Redwood Boule (Stammware) Prime Quality

Raw material:	Winter felled butt log Sourced from the best pine districts in Scandinavia		
Production:	Sawn in frame saw		
Drying:	Air dried / chamber dried		
Moisture content:	Shipping dried: 16% + -2% Special drying: 10% + -2%		
Sorted:	Inspected and quality determined by the following Good A-quality approximately 15% B-quality Poorer quality screened		
Measuring:	Each piece is marked with black chalk width & length		
Length:	30:30 cm		
Width:	1:1 cm measured on the middle plank, narrow side Package Specification supplied		
Marking:	SA  S trademark in the packet end or own Stamp		
Dimensions:			
Narrow sizes:	63, 75 mm	Average widths	20-21 cm
Normal sizes:	25, 32, 38, 40, 44, 50, 63, 75 mm		23-28 cm
Wide sizes:	50, 63, 75, 80, 90, 100 mm		32-35+ cm
Lengths:			
Falling lengths:	from 2.7 to 6.0 meters		
Average Length approx:	4.0 m		



PEFC- Certified



**ANSGARIUS
SVENSSON AB**
Södra Vi

Ansgarius Svensson AB • Box 145 • S-598 71 Södra Vi • SWEDEN
Visiting Address: Industrigatan 35, Södra Vi
Phone: +46 492-209 80 • Fax: +46 492-209 60
info@ansgariussvenssonab.se • www.ansvab.se